

ENVIRONMENTAL JUSTICE FACT SHEET

1.1 Introduction

Seekonk Asphalt Corporation has filed an Air Quality Permit Application with the Massachusetts Department of Environmental Protection (MassDEP) for its facility at 45 Industrial Court, Seekonk, Massachusetts. The proposed project is subject to the Massachusetts Air Pollution Control Regulations and must apply for and receive a permit (known as an "Approval") before it can begin construction of the project. MassDEP is currently reviewing the permit application according to the applicable regulations.

After completing its review, the MassDEP will issue a proposed decision to approve or deny the permit application, and at that time will provide a 30-day public comment period on its proposed decision. Information on how to review the permit application and be notified of MassDEP's proposed decision, and how to submit comments, can be found at the bottom of this Environmental Justice (EJ) Fact Sheet.

1.2 Facility Information

Seekonk Asphalt Corporation is planning to construct a new hot mix asphalt plant at 45 Industrial Court, Seekonk, MA 02771 under the North American Industry Classification System (NAICS) code 324121. The plant will consist of aggregate handling, hot melt asphalt mixing operation, and storage tanks. Emissions from the Seekonk Plant will include criteria pollutants from fuel burning, as well as volatile organic compounds (VOC), hazardous air pollutants (HAPs), and particulate matter (PM) from material handling.

Rock crushing will not occur. The proposed rotary drum dryer burns natural gas and has a heat input of 75 million British thermal units per hour (MMBtu/hr). Massachusetts Department of Environmental Protection's (MassDEP's) requires a plan approval (i.e. air permit) for natural gas combustion equipment with heat input greater than 10 MMBtu/hr per 310 Code of Massachusetts Regulations (CMR) 7.02(4) (a) 2. According to 310 CMR 7.02(5) (a) 2, a Comprehensive Plan Approval is required for natural gas combustion equipment greater than 40 MMBtu/hr. Based on Seekonk Asphalt Corporation's needs and limitations, it was determined that a Non-Major Comprehensive Plan Approval (NMCPA) application would be the appropriate permitting path. The Facility proposes to operate from 7 AM to 7 PM, Monday through Friday, and 7 AM to 5 PM on Saturdays. The Facility proposes production restrictions of 225 tons of asphalt per hour and 250,000 tons of asphalt per consecutive 12-month period.

1.3 Project Information

The Facility includes the following emission units:

- ▶ Emission Unit 1 (EU 1) – Dryer/Mixer
- ▶ Emission Unit 2 (EU 2) – Hot Oil Heater
- ▶ Emission Unit 3 (EU 3) – Material Handling and Storage

1.4 Regulatory Information

Pollution control equipment that represents Best Available Control Technology (BACT) will be installed on the EUs. A fabric filter baghouse will be installed to control PM from the dryer/mixer. The dryer will have a low NO_x burner. A blue smoke abatement system will be installed to control VOC and HAP emissions from the silos. The liquid asphalt tanks will have condensers to control VOC and HAP. The hot oil heater will have a Low NO_x burner. The conveyors and storage piles will be covered to control PM. Ecosorb or a similar

additive will be used in the asphalt storage tanks to suppress fugitive odors. The proposed emission limits are shown in Table 1 below. Seekonk Asphalt will be considered a minor source since the emissions are below the major source thresholds.¹

Table 1 – Proposed Emission Limits

| EU # | EU Description | PM₁₀ | PM_{2.5} | SO₂ | VOC | CO | NO₂ | HAP |
|-----------------------|-------------------------------|------------------------|-------------------------|-----------------------|------------|-----------|-----------------------|------------|
| 1 | Dryer/Mixer | 1.45 | 1.45 | 0.43 | 3.75 | 10.25 | 1.13 | 4.57E-01 |
| 2 | Hot Oil Heater | 0.09 | 0.09 | 0.03 | 0.51 | 0.51 | 0.89 | 1.29E-02 |
| 3 | Material Handling and Storage | 0.72 | 0.19 | -- | 0.19 | 0.10 | -- | 1.51E-02 |
| Facility Total | | 2.26 | 1.73 | 0.46 | 4.45 | 10.86 | 2.02 | 0.49 |

The plan approval issued by MassDEP would include monitoring, recordkeeping, and reporting requirements necessary to ensure that the Facility will operate in compliance with applicable regulations and emissions limits.

1.5 EJ Populations

Figure 1 shows the locations of MassDEP and Rhode Island Department of Environmental Management (RIDEM) designated EJ populations within one mile of the Seekonk Asphalt facility. Figure 2 shows the locations of MassDEP and RIDEM designated EJ population within five miles of the Seekonk Asphalt facility. The figures were developed utilizing MassDEP’s EJ downloadable files² and RIDEM’s Environmental Resource Map.³ There are no EJ blockgroups located within 1 mile of the Facility. The affected blockgroups in a 5-mile radius are minority and low income EJ blockgroups and are located in Rhode Island.

Air dispersion modeling was performed for emissions from the facility, including criteria pollutants and HAPs. The resulting modeled concentrations of criteria pollutants were below the National Ambient Air Quality Standards (NAAQS). In addition, modeled concentrations of HAPs were below the MassDEP’s ambient air toxic guidelines. Therefore, the EJ populations located within the 5-mile radius will not be adversely impacted by air emissions from the proposed project.

¹Major source thresholds in Massachusetts are 50 tons per year for volatile organic compounds (VOC) and nitrogen oxides (NO_x); 100 tons per year for particulate matter with an aerodynamic diameter of 10 microns or less (PM₁₀), particulate matter with an aerodynamic diameter of 2.5 microns or less (PM_{2.5}), carbon monoxide (CO), nitrogen dioxide (NO₂), and sulfur dioxide (SO₂); and 10 tons per year of any single hazardous air pollutant (HAP) or 25 tons per year combined HAPs.

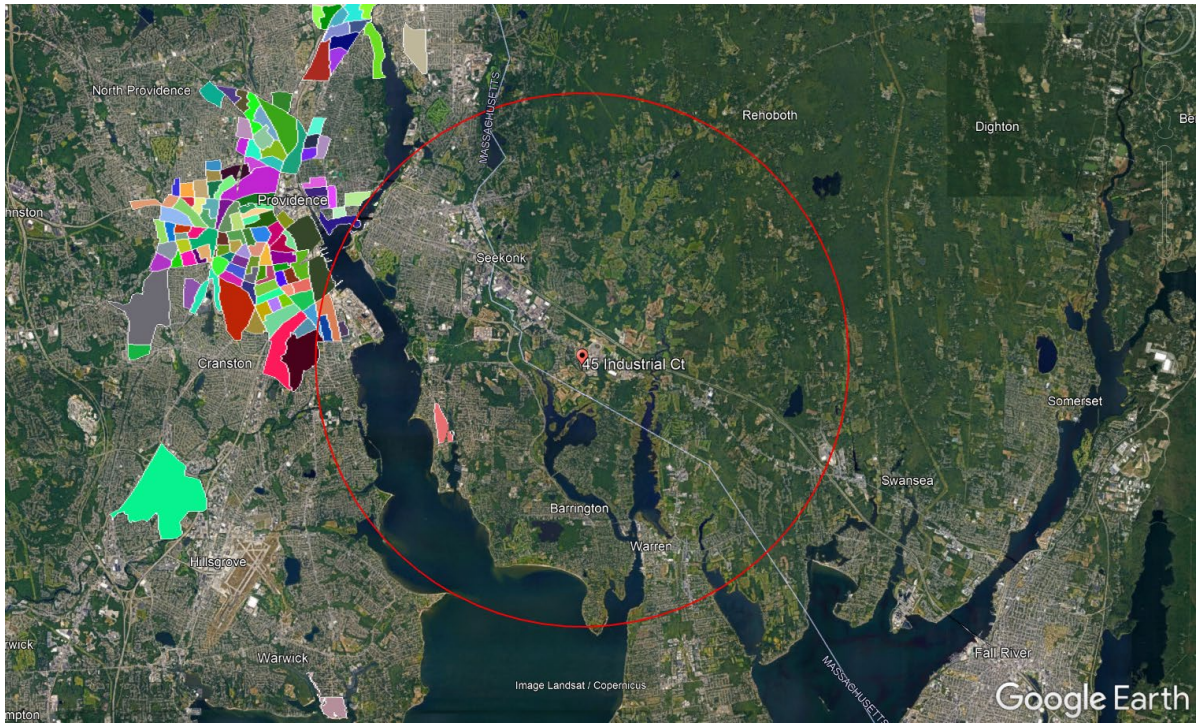
² <https://www.mass.gov/info-details/massgis-data-2020-us-census-environmental-justice-populations#downloads->

³ <https://ridemgis.maps.arcgis.com/apps/webappviewer/index.html?id=87e104c8adb449eb9f905e5f18020de5>

Figure 1. EJ Populations within 1 mile of Seekonk Asphalt



Figure 2. EJ Populations within 5 miles of Seekonk Asphalt



1.6 Public Participation and Comment

The MassDEP is currently reviewing this permit application. If you have questions or would like more information about the permit application or agency review process, or would like to be added to the distribution list to be notified when the public comment period on the draft decision begins, please contact the MassDEP personnel listed at the end of this section.

The permit application is currently available for public review via the Executive Office of Energy and Environmental Affairs (EEA) ePLACE Public Access Portal: <https://eeaonline.eea.state.ma.us/EEA/PublicApp/> On the main EEA ePLACE Portal page, click on the **orange** "Search and/or Comment" button, then on the name of the applicant/facility on the resulting page.

After the MassDEP completes its review of the permit application, the agency will issue a proposed decision, subject to a 30-day public comment period. This information will also be posted in the ePLACE Public Access Portal. If you would like to be notified of the proposed decision and the public comment period, please contact Peter Russell of MassDEP at peter.russell@mass.gov.

1.7 Applicant Contact Information

Please contact Jeff Joaquin at Jeff@seekonkasphalt.com or (401) 374-3696 with any questions regarding this project.